

CRIME SCENE DO NOT CROSS

CA 0008: Evidence Report

The Murder of Captain Cornball



Evidence Summary

- Fingerprint Match
- Ink Match
- Blood Type Match
- Possible Huntington's Disease
- Chromosome Disorder
- DNA Fingerprint Color/Pattern Match
- DNA Sequence Match

Fingerprint Match

The fingerprint from the glass cup at the crime scene matched the fingerprint taken by Norma Nanny. Captain Cornball was found next to the glass

We dusted for fingerprints using fluorescent powder and used a UV light to observe and analyse the finger prints



DNA Sequence

Norma Nanny- GATTCCGAACGG

Sam Stubs- GATTCCCAACGG

Captain Cornball- GATTCCGCGG

Glen Glendora- GATTCCGAACGG

Fred Fleckstone- GATTCCCAACGG

Theresa Thyme- GATTCCCAACGG

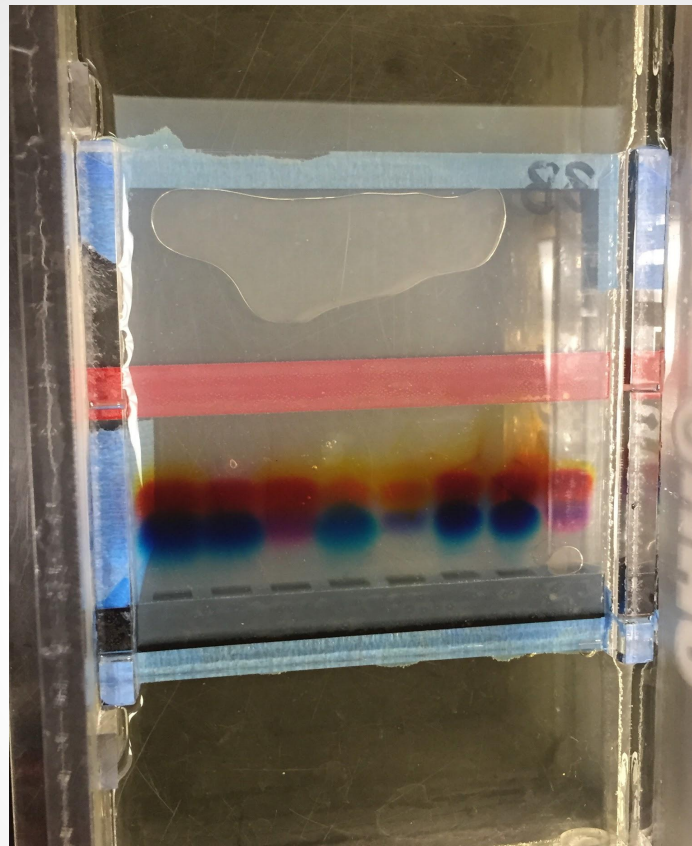
Crime Scene Sample 1- GATTCCGAACGG = Captain Cornball

Crime Scene Sample 2- GATTCCGAACGG = Norma Nanny



DNA Color/Pattern

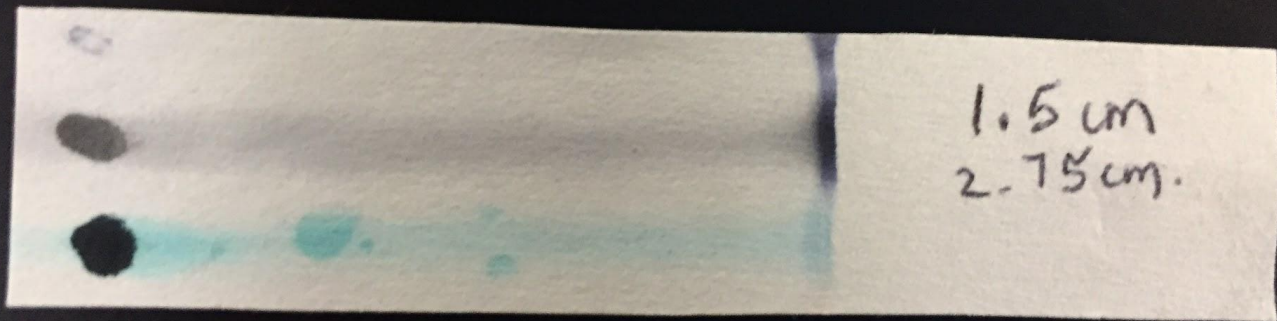
- Using the blood from the crime scene we ran the DNA through a gel in order to find a color pattern
- Using the pattern of colors we can match the crime scene DNA with the suspects DNA
- The pattern of the crime scene was red to yellow, and the second sample taken was red to yellow to blue
- This matched Normal Nanny's DNA pattern and Captain Cornball's pattern



DNA run through gels in order to show a color pattern

Ink Match

The ink on the crime scene message matched the crayola marker that both Norma Nanny and Sam Stubs had. The r_f value, distance the inks travel, was both the same with Norma Nanny's pen and the ink on the note.



1.5 cm
2.75 cm.

Triple X Syndrome

Associated of increased risk of learning ability

Delayed development of speech and skills

Victims suffer from anxiety and trouble with relationships with peers

Victims can also struggle with personality or psychological problems

Victims are mentally stable with a stable family life, however with Norma Nanny's home life, her father dying and her aunt having depression, her problems could have increased.

Blood Type

The blood found on the murder weapon was both A and O

Norma Nanny's blood type was A, which could have gotten on the weapon during the struggle of the murder and after she cut herself on the glass

Captain Cornball's blood type was type O

Blood Typing:

Red Blood Cell Type	Antibodies Present	Antigens Present
A	Anti-B	A Antigen
B	Anti-A	B Antigen
AB	None	A and B Antigens
O	Anti-A and Anti-B	None

Degree of Murder

Norma Nanny should be charged with murder of the first degree, and Sam Stubs charged with accomplice to the murder of Captain Cornball.

Conclusion of Evidence & Series of Events

Evidence:

- The blood types found on the weapon
- The ink on the note
- The fingerprints left on the glass
- And symptoms of her disorders

How it Happened:

As Sam Stubs turned out the lights on the field Norma Nanny went for the murder of Captain Cornball. During the attempt she cut her hand on the glass which smeared blood on the weapon as she stabbed Captain Cornball.

